



## HOBAS CC-GRP Pressure Pipes (HOBAS WaterLine®)

DN.....Nominal Diameter  
 ODP.....Outside Diameter Pipe, mm  
 e.....Wall Thickness of Pipe, mm  
 M.....Pipe Mass, kg/m  
 L.....Length of Pipe

Alternative PN classes can be manufactured on customers request.

DN	Series	ODP mm	PN 4 SN 5000		PN 4 SN 10000		PN 6 SN 5000		PN 6 SN 10000		PN 10 SN 5000	
			e <sup>1)</sup> mm	M <sup>1)</sup> kg/m	e <sup>1)</sup> mm	M <sup>1)</sup> kg/m	e <sup>1)</sup> mm	M <sup>1)</sup> kg/m	e <sup>1)</sup> mm	M <sup>1)</sup> kg/m	e <sup>1)</sup> mm	M <sup>1)</sup> kg/m
150	2	168	–	–	–	–	–	–	–	–	–	–
200	2	220	5.5	6.5	6.6	8.1	5.5	6.5	6.6	8.1	5.7	6.7
250	2	272	6.5	9.9	7.8	12.3	6.5	9.9	7.8	12.3	6.7	9.8
300	2	324	7.5	13.9	9.0	17.4	7.5	13.9	9.0	17.3	7.7	13.7
350	2	376	8.5	18.7	10.2	23.3	8.5	18.5	10.3	23.0	8.7	18.2
400	3	401	8.9	20.6	10.7	25.5	8.9	20.5	10.7	25.4	9.4	21.1
400	2	427	9.4	23.3	11.3	28.9	9.3	23.2	11.3	28.8	9.8	23.5
500	3	501	10.7	31.6	12.9	39.2	10.7	31.5	12.9	39.0	11.0	31.4
500	2	530	11.2	35.3	13.6	43.8	11.2	35.0	13.6	43.5	11.5	34.9
600	1	616	12.7	47.3	15.6	59.0	12.7	47.1	15.6	58.7	13.1	46.8
700	1	718	14.7	64.2	18.1	80.1	14.7	63.6	18.0	79.7	15.2	63.3
800	1	820	16.6	83.3	20.4	104.0	16.5	82.2	20.4	103.5	17.0	81.8
900	1	924	18.5	105.5	22.8	131.9	18.5	104.6	22.7	131.1	19.0	103.3
1000	1	1026	20.3	129.8	25.1	162.2	20.4	128.7	25.1	161.2	20.8	126.6
1100	3	1099	21.8	149.1	26.8	186.0	21.8	147.6	26.8	184.9	22.3	145.1
1200	1	1229	24.2	186.2	29.8	232.1	24.2	183.9	29.8	230.6	24.7	180.3
1300		1350	26.5	224.7	32.7	279.8	26.3	221.0	32.5	277.6	26.9	216.6
1400	1	1434	28.0	252.9	34.6	315.1	28.0	250.0	34.6	313.0	28.6	244.8
1500	3	1499	29.2	276.4	36.1	343.7	29.2	273.2	36.1	342.1	29.8	267.1
1600	1	1638	31.8	329.8	39.2	409.6	31.7	324.6	39.2	407.1	32.3	317.4
1700		1720	33.3	363.2	41.1	451.6	33.2	357.3	41.1	448.7	33.9	349.5
1800	1	1842	35.5	416.6	43.8	516.5	35.4	409.6	43.8	513.3	36.0	399.4
2000	1	2046	39.3	513.7	48.5	636.2	39.2	503.7	48.4	632.9	39.8	491.5
2200	1	2250	43.0	621.3	53.1	768.7	42.9	609.1	53.1	765.3	43.5 <sup>2)</sup>	593.1 <sup>2)</sup>
2400	3	2400	45.8	706.4	56.5	873.4	45.5	690.5	56.4	867.7	46.3 <sup>2)</sup>	672.4 <sup>2)</sup>
2400	1	2453	46.8	738.3	57.7	912.0	46.6	726.5	57.6	906.2	47.3 <sup>2)</sup>	702.2 <sup>2)</sup>
2700		2740	52.1	921	64.2	1136	51.7	898	64.1	1129		
2900		2893	54.9	1027	67.6	1266	54.5	1000	67.6	1258		

Table 3.2, part 1: HOBAS CC-GRP Waterline

<sup>1)</sup> Dimensions and masses may vary from the tabled values, depending on local standards and practices, however product performance always comply with the relevant standards.

<sup>2)</sup> Due to the high diameter/pressure ratio a detailed description of the installation parameters as well as profound static calculation is required, it is recommended to consult a HOBAS engineer.

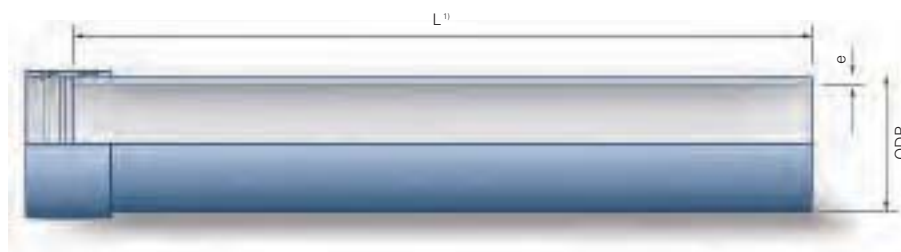


Fig. 3.3: HOBAS CC-GRP Pressure Pipe

DN	Series	ODP mm	PN 10 SN 10000		PN 16 SN 10000		PN 20 SN 10000		PN 25 SN 10000		PN 32 SN 10000	
			e <sup>1)</sup>	M <sup>1)</sup>	e <sup>1)</sup>	M <sup>1)</sup>	e <sup>1)</sup>	M <sup>1)</sup>	e <sup>1)</sup>	M <sup>1)</sup>	e <sup>1)</sup>	M <sup>1)</sup>
			mm	kg/m	mm	kg/m	mm	kg/m	mm	kg/m	mm	kg/m
150	2	168	6.1	6.4	7.9	9.5	10.0	11.8	–	–	–	–
200	2	220	6.7	8.0	7.4	8.7	8.6	10.3	10.1	12.2	12.3	15.4
250	2	272	7.9	12.1	8.5	12.7	10.1	15.1	12.0	18.1	14.6	23.0
300	2	324	9.1	16.9	9.9	17.8	11.5	20.9	13.8	25.0	17.0	32.0
350	2	376	10.4	22.5	11.2	23.7	13.0	27.5	15.6	33.1	19.3	42.5
400	3	401	10.9	25.2	12.0	27.1	14.2	32.3	17.0	38.7	20.9	49.3
400	2	427	11.5	28.4	12.5	30.3	15.0	36.3	17.9	43.5	22.1	55.6
500	3	501	13.2	38.7	14.2	40.6	16.9	48.5	20.3	58.5	25.0	74.4
500	2	530	13.8	42.9	14.9	45.1	17.7	53.8	21.3	64.6	26.4	82.8
600	1	616	15.8	57.7	16.8	59.9	19.6	69.7	23.7	84.1	29.5	107.7
700	1	718	18.2	78.2	19.4	80.8	22.5	92.8	27.2	112.4		
800	1	820	20.6	101.3	22.1	105.3	25.3	120.0	30.7	145.5		
900	1	924	22.9	127.8	24.7	133.7	28.2	151.3	34.3 <sup>2)</sup>	183.7 <sup>2)</sup>		
1000	1	1026	25.2	157.0	27.1	163.5	30.7	183.6	37.3 <sup>2)</sup>	222.6 <sup>2)</sup>		
1100	3	1099	27.0	179.9	29.0	187.3	32.9 <sup>2)</sup>	210.7 <sup>2)</sup>				
1200	1	1229	29.9	223.9	32.3	234.1	36.6 <sup>2)</sup>	263.2 <sup>2)</sup>				
1300		1350	32.6	269.4	35.3	282.4	40.2 <sup>2)</sup>	316.9 <sup>2)</sup>				
1400	1	1434	34.7	304.5	37.0	314.1	42.1 <sup>2)</sup>	353.5 <sup>2)</sup>				
1500	3	1499	36.2	332.4	38.7	343.8	44.0 <sup>2)</sup>	386.8 <sup>2)</sup>				
1600	1	1638	39.3	395.4	42.1	410.0	47.9 <sup>2)</sup>	461.1 <sup>2)</sup>				
1700		1720	41.2	435.3	44.2 <sup>2)</sup>	452.0 <sup>2)</sup>						
1800	1	1842	44.0	498.4	47.2 <sup>2)</sup>	518.4 <sup>2)</sup>						
2000	1	2046	48.6	612.9								
2200	1	2250	53.2 <sup>2)</sup>	740.8 <sup>2)</sup>								
2400	3	2400	56.6 <sup>2)</sup>	840.7 <sup>2)</sup>								
2400	1	2453	57.8 <sup>2)</sup>	877.6 <sup>2)</sup>								
2700		2740										
2900		2893										

Table 3.2, part 2: HOBAS CC-GRP Waterline

<sup>1)</sup> Dimensions and masses may vary from the tabled values, depending on local standards and practices, however product performance always comply with the relevant standards.

<sup>2)</sup> Due to the high diameter/pressure ratio a detailed description of the installation parameters as well as profound static calculation is required, it is recommended to consult a HOBAS engineer.